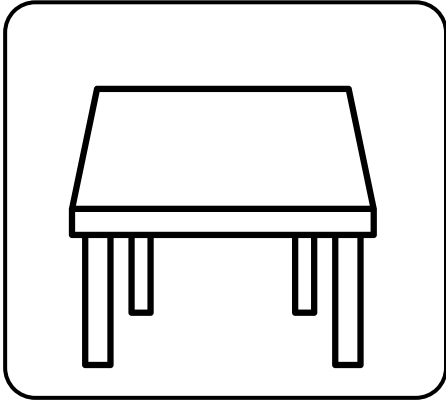




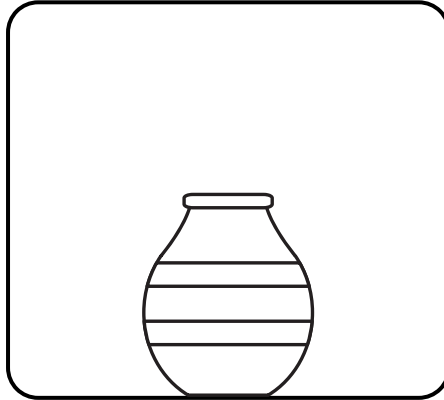
Name: .....

Class: .....

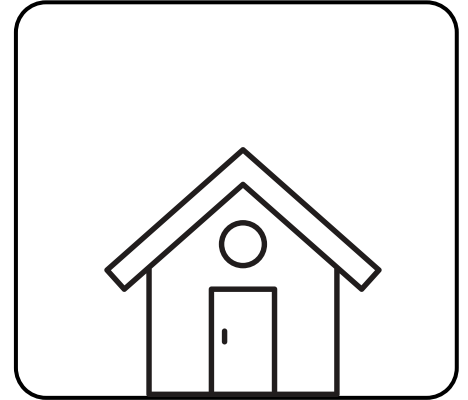
**Instruction :** Read the sentences and follow the directions.



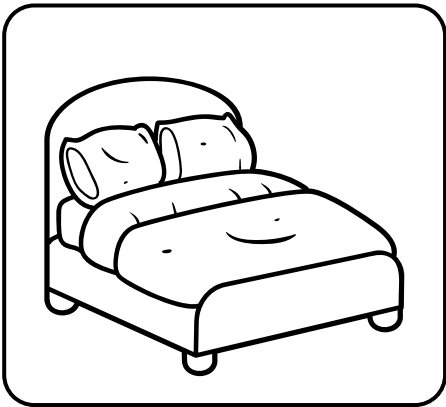
Draw a mouse under the table.



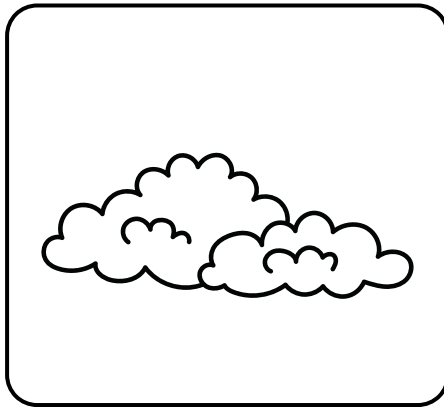
Draw four flowers in the vase.



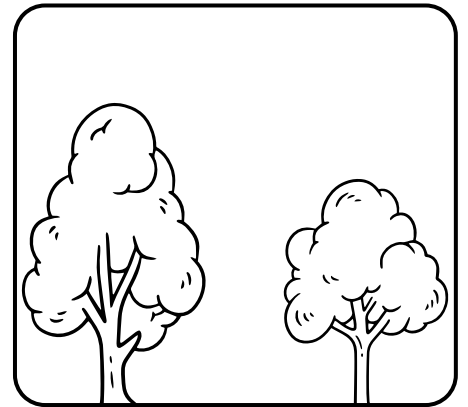
Draw a tree next to the house.



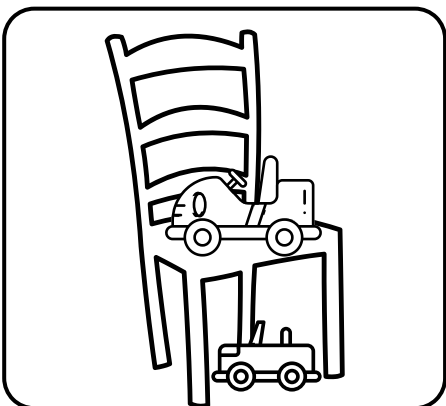
Draw a big dog on the bed.



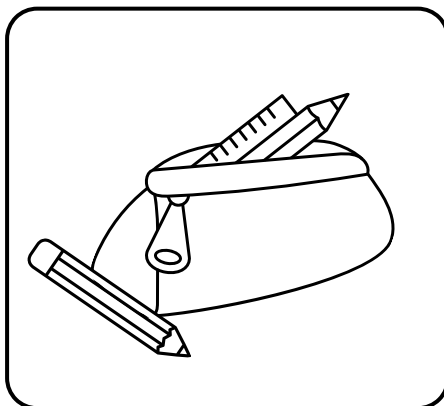
Draw a sun behind the clouds.



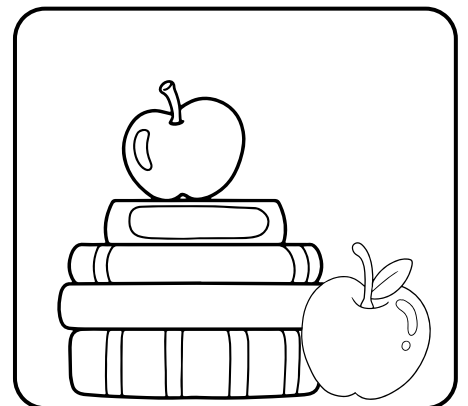
Draw a kid between the trees.



Color the car on the chair blue. Colour the car under the chair red.



Color the pencil next to the pencil case yellow and black.



Color the apple on the books red. Color the books blue.



Name: .....

Class: .....

**Instruction :** Choose the correct preposition to complete each sentence.

- The explorers hiked \_\_\_\_\_ the dense jungle for three days.  
(A) through (B) over (C) at
- My father will return home \_\_\_\_\_ sunset.  
(A) in (B) by (C) into
- There is a small bridge built \_\_\_\_\_ the narrow river.  
(A) across (B) among (C) since
- The children were hiding \_\_\_\_\_ the heavy curtains.  
(A) behind (B) between (C) across
- The shop will remain closed \_\_\_\_\_ Sunday to Tuesday.  
(A) from (B) at (C) in
- The ball rolled \_\_\_\_\_ the stairs and into the garden.  
(A) down (B) through (C) among
- We must finish this project \_\_\_\_\_ the end of this week.  
(A) by (B) on (C) into
- The helicopter was hovering \_\_\_\_\_ the tall building.  
(A) over (B) in (C) under
- The swimmer dove \_\_\_\_\_ the pool to cool off.  
(A) into (B) on (C) at
- The athlete ran \_\_\_\_\_ the finish line with great speed.  
(A) towards (B) between (C) in
- Are there any apples left \_\_\_\_\_ the basket?  
(A) in (B) on (C) at
- I have not seen my cousin \_\_\_\_\_ last Christmas.  
(A) since (B) for (C) during
- The cat is sleeping \_\_\_\_\_ the shade of the tree.  
(A) in (B) on (C) over



Name: .....

Class: .....

**Instruction :** Fill in the blanks with the most appropriate preposition. Some sentences may require prepositions of time, place, or movement.

- The soldiers marched bravely \_\_\_\_\_ the narrow mountain pass.
- We have lived in this beautiful city \_\_\_\_\_ more than ten years.
- The principal distributed the prizes \_\_\_\_\_ the winners of the competition.
- The heavy rain continued to fall \_\_\_\_\_ the entire night.
- You must submit your project report \_\_\_\_\_ next Friday.
- The hikers climbed \_\_\_\_\_ the steep hill to reach the temple.
- There is a strong fence built \_\_\_\_\_ the perimeter of the garden.
- The passengers had to wait \_\_\_\_\_ the airport for six hours.
- The secret tunnel goes deep \_\_\_\_\_ the ground.
- We were advised not to walk \_\_\_\_\_ the railway tracks.
- The explorers traveled \_\_\_\_\_ the desert using a compass.
- The baby fell asleep \_\_\_\_\_ her mother's lap.
- Is there any connection \_\_\_\_\_ these two different events?
- The cat jumped \_\_\_\_\_ the kitchen counter to reach the milk.
- He has been practicing the piano \_\_\_\_\_ 5:00 AM this morning.
- The birds are flying in a V-shape \_\_\_\_\_ the blue sky.
- Please distribute these worksheets \_\_\_\_\_ the students in the back row.
- The keys were found hidden \_\_\_\_\_ a pile of old newspapers.
- The marathon runner collapsed just a few meters \_\_\_\_\_ the finish line.
- We stood \_\_\_\_\_ the shade of a large banyan tree to rest.



Download App

Name: .....

Class: .....

**Instruction :** Find the wrong preposition related to time and write the correct one in the blank.

- I am going to a party at Friday.

.....

- My brother was born on 2015.

.....

- We have been playing cricket since three hours.

.....

- The school bell rings in 8:00 AM.

.....

- It is very cold on the winter season.

.....

- I will meet you on lunchtime in the canteen.

.....

- We reached home from the trip in midnight.

.....

- I have lived in this house for 2010.

.....

- The local market remains closed in Sundays.

.....

- I usually do my yoga practice on the morning.

.....

- We watched a long movie for the evening.

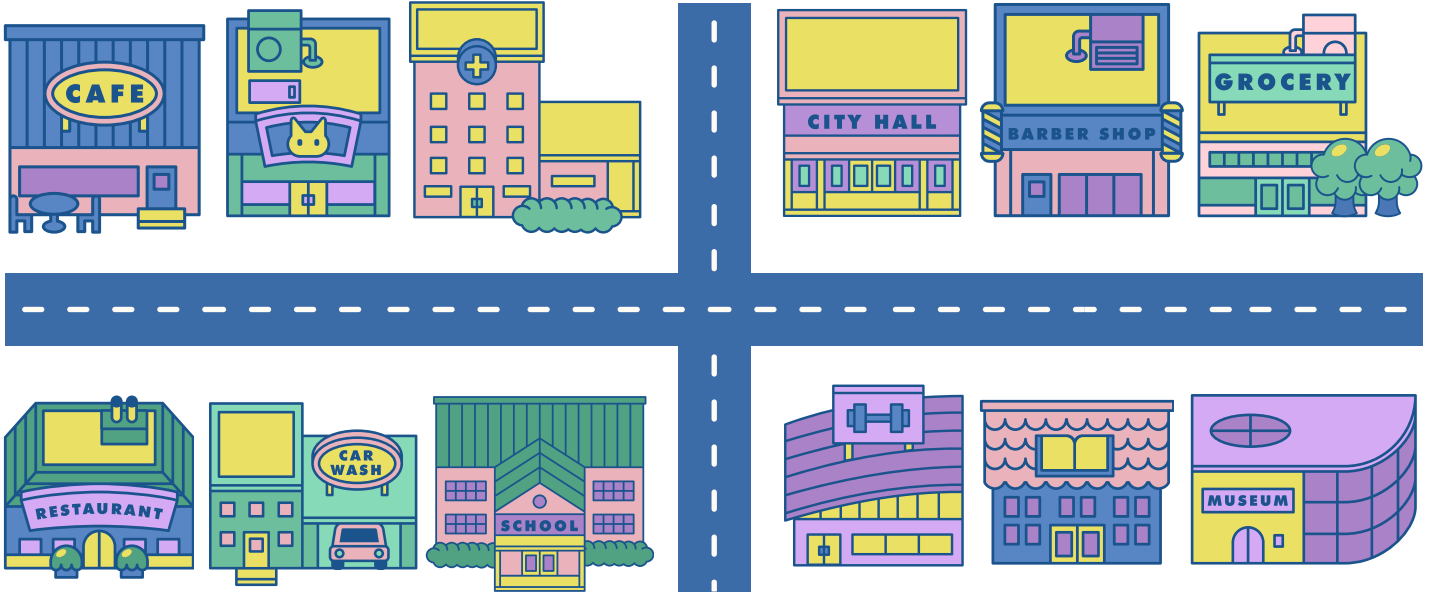
.....



Name: .....

Class: .....

**Instruction :** Look at the map and complete the sentences with prepositions from the box. You may need to use each preposition more than once.



IN    NEXT TO    BETWEEN    OPPOSITE    IN FRONT OF    ON THE CORNER

1. There is a cafe \_\_\_\_\_
2. There is a car wash \_\_\_\_\_ the restaurant.
3. There is a gym \_\_\_\_\_ the school.
4. There is a library \_\_\_\_\_ the gym and the museum.
5. There are trees \_\_\_\_\_
6. There is a car \_\_\_\_\_ the car wash.
7. There are plants \_\_\_\_\_ the restaurant.
8. There is a barber shop \_\_\_\_\_ the library.
9. There is a pet shop \_\_\_\_\_ the cafe and the hospital.
10. There is a grocery \_\_\_\_\_ the barber shop.